



IMMUNO-model

Modelling immunotherapy response
and toxicity in cancer



www.immuno-model.eu

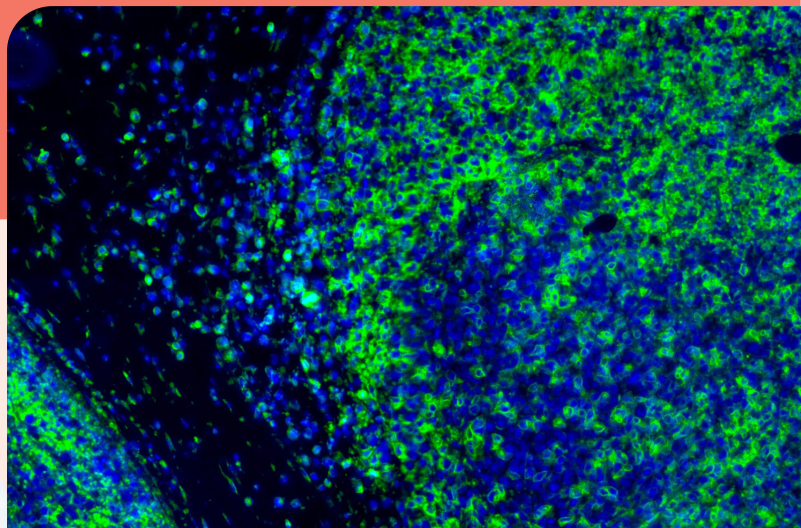
Are you working with pre-clinical models in the field of immunotherapy and cancer research and would like to gain scientific experience abroad?

Short-Term Scientific Missions (STSM) Applications are **NOW OPEN!**

in the scope of IMMUNO-model COST Action CA21135

About IMMUNO-model

The COST Action IMMUNO-model CA21135 aims to foster research and innovation in the field of preclinical immuno-oncology models with the ultimate goal of advancing in the treatment of cancer patients by improving their outcomes and quality of life.



How to Apply

- Became a Member of IMMUNO-model - www.immuno-model.eu
- CHECK ELIGIBILITY, DATES and HOW TO APPLY
www.immuno-model.eu/activities/stsms

This flyer is based upon work from COST Action IMMUNO-model CA21135, supported by COST. COST (European Cooperation in Science and Technology) is a funding agency for research and innovation networks. Our Actions help connect research initiatives across Europe and enable scientists to grow their ideas by sharing them with their peers. This boosts their research, career and innovation.